

XE215D

Hydraulic Excavator



Advanced Configuration

Ecological and economical

- ▶ Customized high-power engine with stronger power
- ▶ Adopting XCMG's proprietary matching technology, the operation efficiency is higher, the fuel consumption is smaller.
- ▶ Minimized impact on emission systems and make it more environmentally friendly

Multiple applications

- ▶ Different boom, arm and bucket combinations can adapt to as many working conditions as possible
- ▶ Multi-functional work tool system can meet various operational requirements including digging, breaking, dismantling and so on

Comfortable operational experience

- ▶ Air conditioner and heater ensure the appropriate temperature
- ▶ Integrated control panel and large display screen provide multiple information
- ▶ Faster data management, more efficient control
- ▶ The cab shock absorption performance is better

Excellent after-sales service

- ▶ Global after-sales service system and quick response mechanism
- ▶ Real-time technical consultation and maintenance

Convenient maintenance

- ▶ Easy maintenance design, open the engine hood for no dead angle maintenance

Safe and durable

- ▶ Upgrade undercarriage to improve load bearing performance
- ▶ Strengthened key stress-bearing parts of chain links
- ▶ Roll-over cab for added safety



Ecological and economical

- ▶ Engines that meet the national three-stage emission standards. The engine is powerful, rugged and fuel efficient for all applications. Combining proven, rugged components and precision manufacturing processes for greater reliability and efficiency
- ▶ Low-speed high-torque custom, fully electronically controlled engine in accordance with excavator working conditions, torque reserve increased by 15%. Fully-controlled high-pressure common rail engine technology, fuel utilization increased by 5%

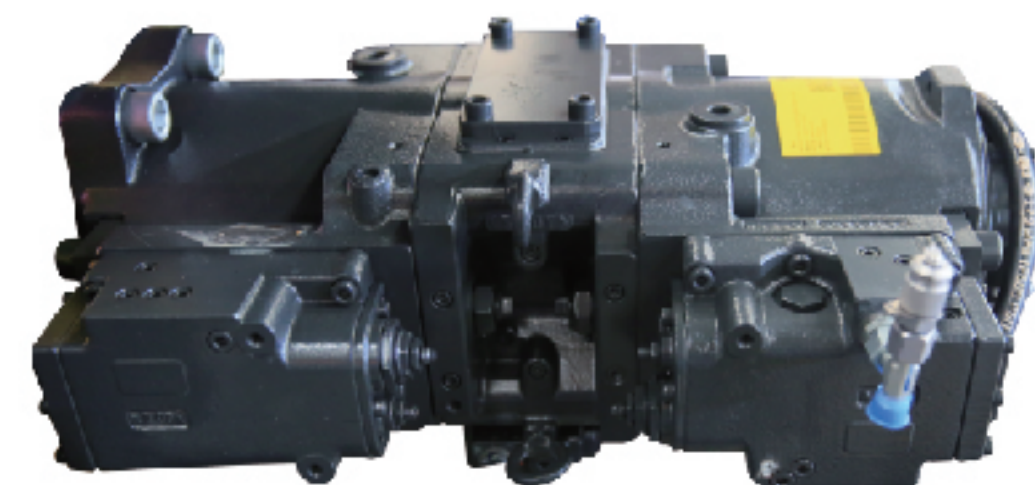


- ▶ The industry's first large-displacement high-efficiency pump, the displacement increased by 13.6%, the power increased by 4.5%, the whole vehicle moves faster



- ▶ Innovate the power matching mode, optimize the power matching between the pump and the engine, replace the new generation electric system, increase the engine speed sensing control in the ESS mode, make full use of the engine power, and improve the working efficiency of the product by 10%.

- ▶ High-efficiency large-displacement motor, the rotary motor increases the displacement and increases the rotary torque of the whole machine by 12.1%



Comfortable and safe

Comfortable

- ▶ Spacious, comfortable and safe cab, AM/FM radio, cigarette lighter and other facilities.
- ▶ The silicone rubber rubber spring composite damper is used to greatly reduce the vibration and impact in a certain frequency band.
- ▶ Equipped with high-grade suspension woven seat, can be adjusted in all directions, good ventilation, can reduce the driver's fatigue fatigue.
- ▶ High-power air-cooling dual-purpose automatic air conditioner with dual-stage air filtration. The all-round stereo air outlet can realize a variety of hair blowing modes, which makes the operation more comfortable.



- ▶ The family-style gold shield-shaped appearance, the lines are stable, the whole machine is more gas, the whole machine is painted simple and generous, the recognition is high, full of power, and has a three-dimensional sense, which is impressive.
- ▶ One-button emergency stop, safety is guaranteed.



Reliable

- ▶ High-quality integrated electrical system with higher index, centralized electrical control, simpler design and more reliable system.

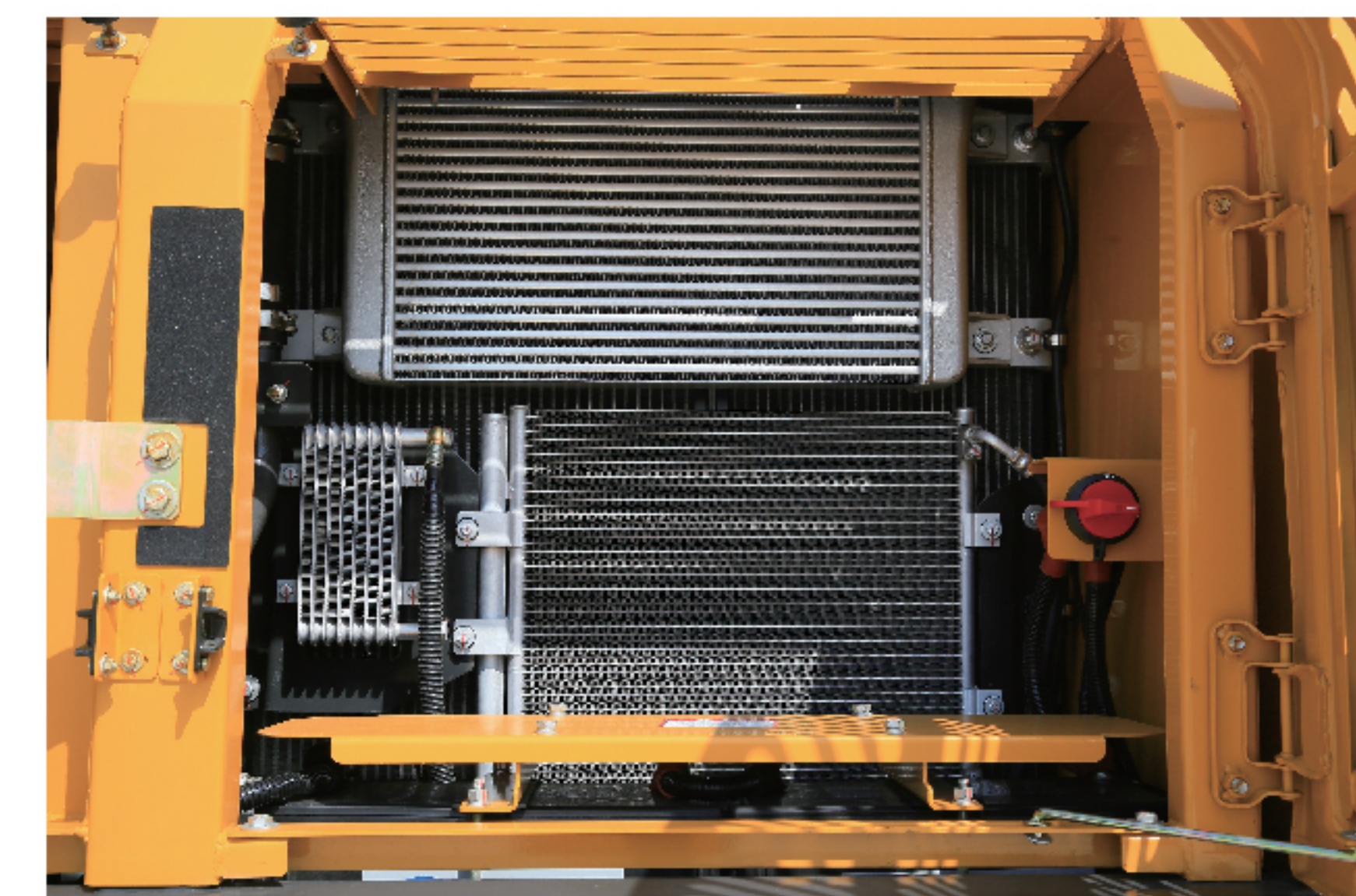


- ▶ High-reliability working device, through computer optimization design and 3D solid modeling design, optimize the design of the working device box structure, forming XCMG's own patented technology. (With the picture, the working device is pulled according to the figure below)
- ▶ New T-sleeve bearing is used at the joint of the bucket bucket to improve wear resistance
- ▶ Casting type single connecting rod, comprehensively optimize stress distribution and improve reliability
- ▶ Dovetail design at the root of the boom to reduce stress concentration



- ▶ The boom arm shaft seat adopts forging shaft seat, which is tempered and treated to increase wear resistance.
- ▶ New type of bucket that improves excavation performance while improving wear resistance
- ▶ Further enhance the strength of the ear plate and the arc plate to improve the service life

- ▶ Developed a thermal management system that improved the operating temperature environment of the engine and hydraulic system, improved system efficiency, reduced fuel consumption, and extended component life.



Multiple application conditions

The independently developed multi-functional intelligent work tool control system can realize crushing, shearing, cleaning, compacting, milling, transporting, pinching, grasping, scraping, loosening, lifting, and other operations, and can truly integrate multiple operations into one machine

With first-rate digging force, the machine can be fully competent under complicated working conditions.



Smart control

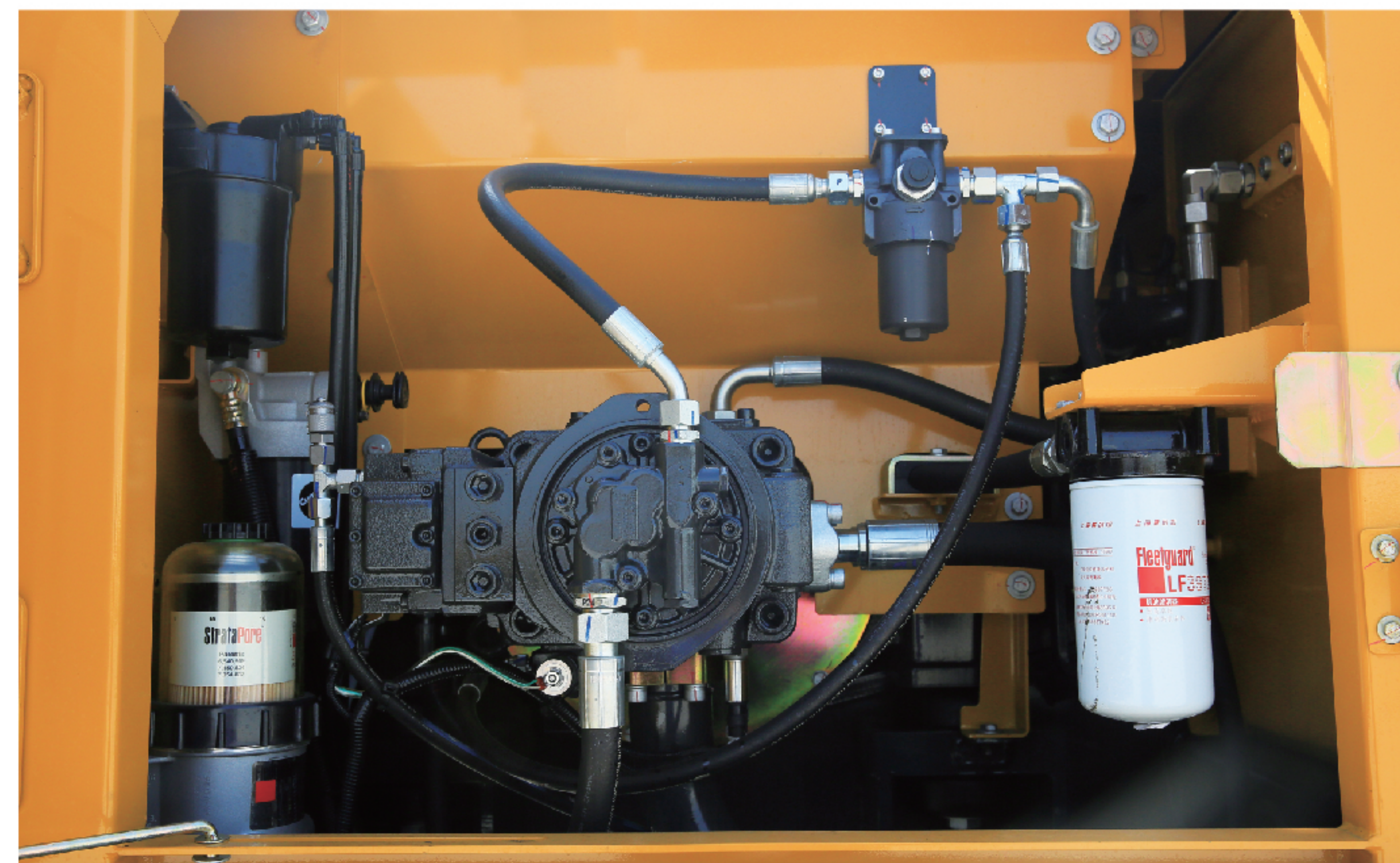
- ▶ Advanced XCMG excavator intelligent management system adopts CAN bus communication and Internet of Things technology, integrates main control system, engine ECM, monitoring system, control panel, GPS cloud control system and on-site diagnostic system to realize digital sharing of machine information and improve Product intelligence level. Convenient mobile app micro-service, grasp the location, working condition, working time, fuel consumption and maintenance cycle of the excavator anytime, anywhere.



- ▶ The autonomous controller collects the altitude of the vehicle position and the engine intake pressure, automatically determines the database, and prompts the operator to select the plateau mode on the display. Intelligently match the hydraulic pump and engine power to ensure the pump's flow output, reduce the engine's speed ratio, prevent black smoke and braking, and ensure the excavator's working efficiency.

Maintenance and service

- ▶ Open hood, all maintenance points are within reach of the ground
- ▶ The engine filter is placed in a centralized position, and the maintenance is convenient and quick
- ▶ Oil water separator alarm device to remind users when to release water
- ▶ Covering a wide range of after-sales service systems, and quickly responding to the rescue mechanism to ensure your peace of mind



| Standard Equipment | | |
|---|--|---------------------------|
| Engine | Name of equipment | XE215D |
| | Engine model | QSB7 |
| | Emission level | Euro III and National III |
| | Automatic preheating | |
| | Oil-water separator with water level indication sensor | |
| | Radial seal air cleaner | |
| | Air prefilter | |
| | 50°C high temperature ambient cooling assembly | |
| | Radiator dust screen | |
| | Fuel marker | |
| | Oil-water quick release device | |
| | Fuel breather valve | |
| | Air pressure difference indicator | |
| | Automatic idle speed | |
| Hydraulic system | Boom/arm flow regeneration | |
| | Auxiliary hydraulic valve | |
| | Reverse rotation damping valve | |
| | Automatic rotation parking brake | |
| | Hydraulic buffer valve | |
| | Straight hydraulic circuit | |
| | Boom priority valve | |
| | Rotary logic valve | |
| | Hydraulic oil ISO VG 46 | |
| | Rotary anti-sway valve | |
| Cab and interior trim | Gauge pressure monitoring | |
| | Pressurized cab | |
| Fully adjustable mechanical suspension seat | | |

| | |
|-----------------------------------|---|
| Cab and interior trim | Adjustable seat armrest |
| | Seat belt (51 mm [2 "] wide) |
| | Openable windscreen with auxiliary device |
| | Front windshield divided by 70/30 ratio |
| | Double laminated windshield and other toughened windows |
| | Sliding door upper window |
| | Bi-directional air outlet air conditioner with defroster (automatic type) (pressurization function) |
| | Color liquid crystal display capable of displaying warning information, filter / liquid replacement information and working hours |
| | Control handle |
| | Travel control pedal with detachable manual control lever |
| | Two stereo speakers |
| | Beverage cup holder |
| | Coat and hat hook |
| | Cleanable floor mat |
| | Air conditioning system |
| Safety and security configuration | High and low gears shift |
| | One-key boost mode |
| | Top sunroof |
| | Intermittent multi-gear wiper |
| | Cup holder/envelope |
| | Cold and warm storage box |
| | Radio receiver |
| | Driving door locks and cabin locks |
| | Alarm horn |
| | Isolation plate between engine and oil pump chamber |
| | Engine Emergency Stop Switch |
| | Rear window emergency exit |
| | Battery circuit breaker |

| | |
|-----------------------------------|--|
| Safety and security configuration | Boom and arm retaining valve |
| | Overheat alarm |
| | Safety handrails and pedals |
| | Anti-skid plate/anti-skid paste |
| | Hydraulic safety locking lever |
| Chassis system and shield | Emergency escape hammer |
| | Left and right rearview mirrors |
| | Bottom frame traction ring |
| | 600 mm (24 ") three-rib track shoe |
| | Protective device kit: chassis bottom sealing plate, walking motor sealing plate |
| Working device | Track single rail protector |
| | Boom 5.68m |
| | Arm 2.9 m |
| Electrical system | Bucket 1.0M3 Strengthened Bucket |
| | Battery (2× 850CCA) |
| | 70A alternator |
| | 7.8 kW starter motor |
| Lighting lamp | XEICS intelligent system |
| | Right and left boom work lights |
| | Right working light installed on storage box |
| | 24V cigarette lighter |
| | Cab interior lighting |
| Counterweight | 4.1 t counterweight |
| Technology | XEICS intelligent control system |
| | Data link socket |

Optional Equipment

| | Name of equipment | XE215D |
|---------------------------|---|--------|
| Engine | Oil-water separator with heater (24V) | |
| | Oil bath type air prefilter | |
| | Electronically controlled silicone oil clutch | |
| | Fuel pump 50L/min | |
| | Coolant heater (fuel type) | |
| Hydraulic system | Rapid fuel filling system | |
| | Hydraulic line: breaker and thumb clamp | |
| | Operation mode switching | |
| | Spare valve | |
| Cab and interior trim | Hydraulic oil ISO VG 32, 68 | |
| | Retractable seat belt (51 mm [2 "] wide) | |
| | Air suspension seat with seat cushion heating | |
| | Vehicle mounted oxygen supply device | |
| | Fire extinguisher | |
| | Explosion-proof valve for arm pipeline | |
| Chassis system and shield | Roll over protective structure (ROPS) | |
| | Counterweight rearview mirror | |
| | Falling object protective structure (FOPS) | |
| | 230 mm (24 ") double-rib track shoe | |
| | 700 mm (28 ") three-rib track shoe | |
| | 800 mm (31 ") double-rib track shoe | |
| | 600 mm (24 ") three-rib track shoe | |
| | 800 mm (31 ") three-rib track shoe | |
| | Extended chassis | |
| | Crawler double guardrail | |

| | |
|---------------------------|--|
| Chassis system and shield | Track rubber block |
| | Full-length track guard0.8-1.0m ³ Rock bucket |
| Working device | Arm 2.4m |
| | 0.9-1.05 m ³ Strengthen bucket |
| | 1.0-1.3m ³ Earthwork bucket |
| | Quick coupler |
| | Hydraulic breaker |
| | Hydraulic thumb pliers |
| | Ripper |
| | Vibratory plate compactor |
| | Hydraulic shear |
| | Grapples |
| | High frequency crusher |
| | Clamshell bucket |
| | Travel alarm |
| Lighting lamp | Scrap grapple |
| | Screening bucket |
| | Camera |
| | 5V USB interface |
| | Pipe grab |
| Lubrication system | 24V cigarette lighter |
| | 12V power interface |
| Lighting lamp | Front working light installed on cab top |
| | Rear working light installed on cab top |
| Lubrication system | Electric self-lubricating system |
| | Arm concentration |

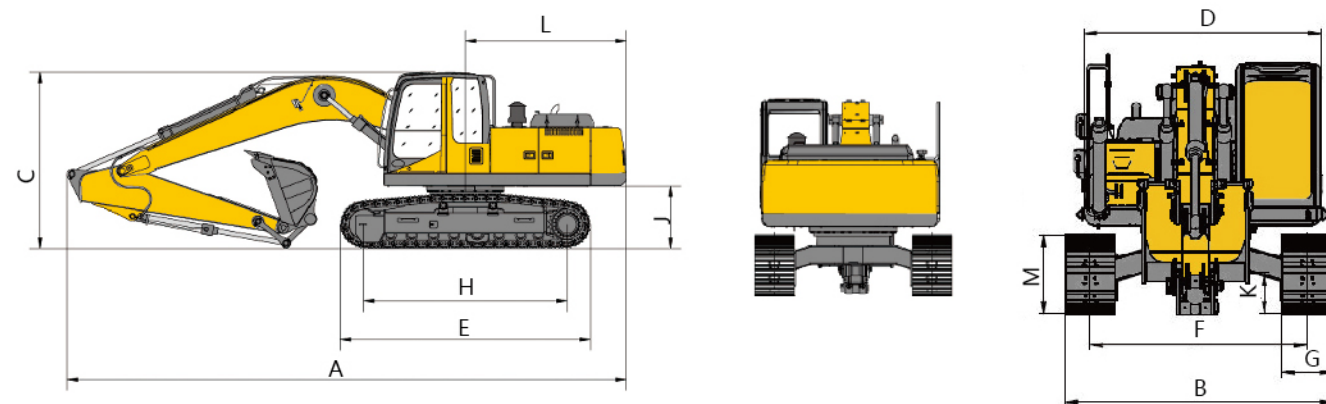
Main Specifications

| Item | Unit | Parameters |
|------------------|----------------------------|------------------|
| Model | / | XE215D |
| Operating weight | Kg | 21900 |
| Bucket capacity | m ³ | 0.8-1.3 |
| Engine | Model | Cummins QSB7 |
| | Direct injection | √ |
| | Four strokes | √ |
| | Water cooling | √ |
| | Turbo-charging | √ |
| | Air to air intercooler | √ |
| | No. of cylinders | 6 |
| | Rated power/speed | kw/rpm 135/2050 |
| | Maximum torque/speed | N.m/rpm 740/1250 |
| | Displacement | L 6.7 |
| Main Performance | Travel speed (H/L) | km/h 5.4/3.1 |
| | Swing speed | r/min 11.8 |
| | Gradeability | ° ≤35 |
| | Ground pressure | kPa 47.2 |
| | Bucket digging force | kN 149 |
| | Arm digging force | kN 111 |
| | Maximum tractive force | kN 184 |
| | Main pump | / / |
| | Rated flow of main pump | L/min 2×225 |
| | Main safety valve pressure | MPa 34.3/37 |
| Hydraulic System | Travel system pressure | MPa 34.3 |
| | Swing system pressure | MPa 27.5 |
| | Pilot system pressure | MPa 3.9 |

| Item | unit | Main specifications |
|--------------|-------------------------|---------------------|
| Oil Capacity | Fuel tank capacity | L 400 |
| | Hydraulic tank capacity | L 220 |
| | Engine oil capacity | L 19.5 |
| Standard | Length of boom | mm 5680 |
| | Length of arm | mm 2910 |
| | Bucket capacity | m ³ 1 |

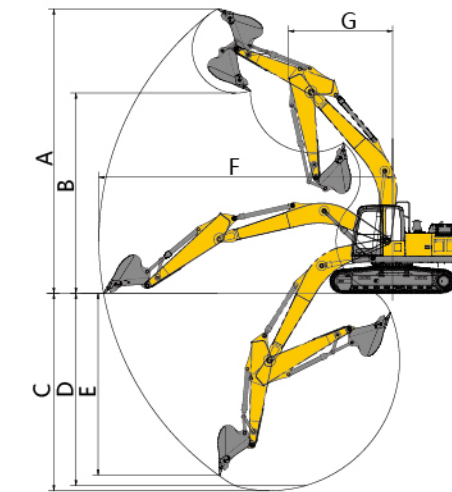
Dimensions

| Item | Unit | Parameters |
|-----------------------------|------|------------|
| A Overall length | mm | 9625 |
| B Overall width | mm | 2990 |
| C Overall height | mm | 3100 |
| D Width of platform | mm | 2830 |
| E Track length | mm | 4255 |
| F Overall width of chassis | mm | 2990 |
| G Track shoe width | mm | 600 |
| H Wheel base of crawler | mm | 3462 |
| I Track gauge | mm | 2390 |
| J Counterweight clearance | mm | 1050 |
| K Minimum ground clearance | mm | 476 |
| L Minimum tail swing radius | mm | 2890 |
| M Track height | mm | 942 |



Working Range

| Item | Unit | Parameters |
|---|------|------------|
| A Max. digging height | mm | 9620 |
| B Max. dumping height | mm | 6780 |
| C Max. digging depth | mm | 6680 |
| D Maximum depth cut for 2240mm(8 ft) level bottom | mm | 6500 |
| E Max. vertical wall digging depth | mm | 5715 |
| F Max. digging radius | mm | 9940 |
| G Min. swing radius | mm | 3530 |



Lifting Capacity

| Lifting point height (m) | Rated lift capacity – Straight ahead (back) (kg) | | | | | | Rated lift capacity – over-side (kg) | | | | | |
|--------------------------|--|----------|---------|---------|---------|------------------------------------|--------------------------------------|----------|--------|---------|--------|------------------------------------|
| | Lifting point radius (m) | | | | | Lifting capacity at maximum radius | Lifting point radius (m) | | | | | Lifting capacity at maximum radius |
| | 1.5 | 3 | 4.5 | 6 | 7.5 | | 1.5 | 3 | 4.5 | 6 | 7 | |
| 7.5 | | | | *3556.9 | | *2987.1 | | | | *3556.9 | | *2987.1 |
| 6 | | | | *3502.6 | | *3146.1 | | | | *3502.6 | | 2330.1 |
| 4.5 | | | | *3994.8 | *3817.2 | 3105.2 | | | | 3942.5 | 2594.5 | 1876 |
| 3 | | | *6268.7 | *4809.1 | 4050.4 | 2804.4 | | | 6063.5 | 3750 | 2519 | 1658.9 |
| 1.5 | | | *7992 | *5683 | 3966.2 | 2741.2 | | | 5680.9 | 3572.8 | 2441 | 1614.4 |
| Ground | | *4211.4 | *9013.6 | 5641.5 | 3920.6 | 2812.3 | | *4211.4 | 5523.4 | 3471.1 | 2398.7 | 1650.9 |
| -1.5 | *4854.2 | *8582 | 9227.2 | 5634.2 | 3944.4 | 3141.8 | *4854.2 | *8582 | 5542.6 | 3464.6 | 2420.7 | 1871.7 |
| -3 | *9490.1 | *12967.8 | *8798.1 | 5739.1 | | 3888.9 | *9490.1 | 11752.6 | 5683 | 3559.4 | | 2371.3 |
| -4.5 | | *10582.1 | *7292.8 | | | *4660.3 | | *10582.1 | 7292.8 | | | 3622.5 |

Capacities marked with an asterisk(*) are limited by hydraulic capacities.



Machmall.com is an electromechanical product platform officially launched by XCMG, aiming to provide global customers with a complete set of high-quality construction machinery solutions and supporting equipment.

Xuzhou Construction Machinery Group Co., Ltd. (XCMG Group), founded in 1943, is the fourth largest worldwide construction machinery manufacturer and the largest in China with products covering 183 countries and regions.

XCMG have 12 complete solutions: Crane lifting, Mining Construction, Earth-moving Solutions, Road Machinery, Concrete Equipment, Tunnel and Underground Space Construction, Mobile Elevating Work Platform (MEWP), Piling and Non-excavation Equipment, Transportation Equipment, Environmental Sanitation Equipment, Firefighting, Safety and Emergency Rescue

徐工徐工，助您成功

— XCMG for your success —



<https://www.machmall.com/>



machmall@xcmg.com



008618652183963
86-516 8773 9797

